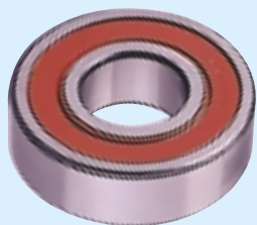
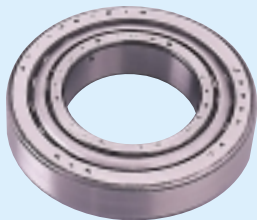


BEARINGS



PRECISION SEALED BALL BEARING
DESIGNATION "P"
Offers least rolling resistance. Never requires lubrication. For medium loads, side thrust and high speeds.
*blue dot on yoke

MACHINED V. Q. (VERY QUIET) BALL BEARING
DESIGNATION "X"
Balls roll in a machined steel, case hardened raceway for least resistance. Slots allow grease into raceway.
*red dot on yoke



TAPERED ROLLER BEARING
DESIGNATION "Y"
For heavy loads, side thrust and high speeds.

ROLLER BEARING. SPLIT SLEEVE OR DRAWN CUP
DESIGNATION "T"
Rollers turn on a hardened steel spanner bushing.
*green dot on yoke



DELRIN™ BEARING
DESIGNATION "M"
A strong bearing material that resists corrosion. Ideal in wet applications. Requires lubrication.

SLEEVE BEARING (BUSHING)
No designation.
Case hardened steel. An inexpensive bearing for lighter loads.



* DELRIN is a registered trademark of the DuPont Co.

AXLES



PLAIN AXLE
Standard in 20 series and all casters with sealed precision bearings. Also heavy duty series casters with grease fittings in wheel.

SELF TAPPING ALLEN HEAD AXLE.
Used with E2 and Carpet Master. Eliminates unsightly nut. Prevents wear on shoes and nylon runs.



CROSS DRILLED AXLE
Standard on 60 and 70 series casters. Axle is drilled through center. Allows grease to flow into the bearing.

GREASE FITTING IN AXLE
Standard on 400 series optional 60 and 70 series. Cross drilled axle with zerk fitting in end. Fits standard grease guns.

